

# Curbside Recycling Services

Best Way Disposal is committed to the conservation of natural resources and minimizing the strain on the planet. The Curbside Recycling Program provides for the collection of recyclable materials at the curbside. The **SINGLE-STREAM RECYCLING PROGRAM** allows residents to **mix all acceptable recyclables in one cart—no sorting!** Keep this brochure handy for easy reference when preparing materials. Improperly prepared materials leads to contamination and increased recycling costs!

## Accepted Items & Preparation Instructions

- ◆ Newspapers, including inserts, comics and advertisements.
- ◆ Magazines, catalogs, books, phone books, office paper, unwanted mail, paper bags, etc.
- ◆ Paperboard, such as cereal boxes, cracker boxes, Paper towel rolls, etc.
- ◆ Corrugated cardboard.
- ◆ Glass jars and bottles of any color.
- ◆ Aluminum cans, foil pie tins, etc.
- ◆ Tin or steel food cans and lids.
- ◆ Plastics such as milk jugs, food tubs detergent bottles, personal care products, etc...



Place papers directly into the recycling cart—no need to bag papers separately.

Food boxes must be clean and free of food.

Remove hard covers from books before recycling.

Corrugated cardboard must be flattened and/or cut down to a size that will fit in the recycling cart

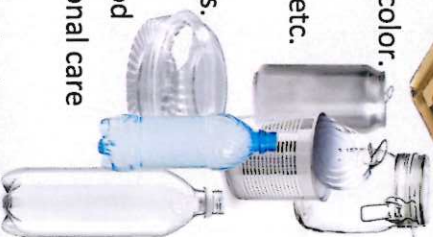
Shredded papers can be placed in a brown paper bag and placed in the cart.

Placing material in plastic bags is not acceptable.

Place materials directly into the recycling cart  
No need to separate recyclable materials.

Labels are OK. Remove caps from bottles.

Rinse containers well—all materials must be clean and free of food, liquid or original contents.



Only **RIGID** plastics marked with symbols



## Recycling Tips

### PLASTICS

### WISH-CYCLING



Many items we purchase are made of recyclable materials, but unfortunately not all are recyclable. When in doubt leave it out!

## Instructions Also Located On Lid

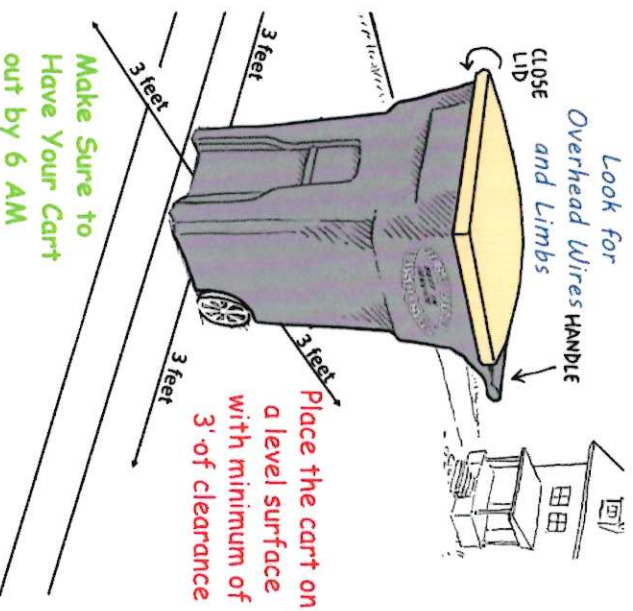


## Not Acceptable Items

- ◆ Aerosol cans
- ◆ Batteries
- ◆ Hazardous liquids or materials
- ◆ Light bulbs
- ◆ Microwave food containers
- ◆ Motor oil / motor oil containers
- ◆ Paint / paint cans
- ◆ Pizza boxes
- ◆ Plastic bags or plastic wrap
- ◆ Scrap metal
- ◆ Soiled food containers
- ◆ Styrofoam of any kind
- ◆ Wax-coated cardboard
- ◆ Window glass
- ◆ Yard waste



# How to position your Curb Cart



**BEST WAY**

## Holiday Schedule

Collection will not be made on the following:

- ◆ New Year's Day ◆ Labor Day
- ◆ Memorial Day ◆ Thanksgiving Day
- ◆ Fourth of July ◆ Christmas Day

On weeks with a holiday occurring Monday through Friday, your pick up day will be delayed one day after the holiday, with Friday's route serviced on Saturday.

# Recycle Pickup Date Schedule

1/8/26	1/7/27	1/6/28
1/22/26	1/23/27	1/20/28
2/5/26	2/4/27	2/3/28
2/19/26	2/18/27	2/17/28
3/5/26	3/4/27	3/2/28
3/19/26	3/18/27	3/16/28
4/2/26	4/1/27	3/30/28
4/16/26	4/15/27	4/13/28
4/30/26	4/29/27	4/27/28
5/14/26	5/13/27	5/11/28
5/29/26	5/27/27	5/25/28
6/11/26	6/10/27	6/8/28
6/25/26	6/24/27	6/22/28
7/9/26	7/8/27	7/7/28
7/23/26	7/22/27	7/20/28
8/6/26	8/5/27	8/3/28
8/20/26	8/19/27	8/17/28
9/3/26	9/2/27	8/31/28
9/17/26	9/16/27	9/14/28
10/1/26	9/30/27	9/28/28
10/15/26	10/14/27	10/12/28
10/29/26	10/28/27	10/26/28
11/12/26	11/11/27	11/9/28
11/27/26	11/26/27	11/24/28
12/10/26	12/9/27	12/7/28
12/24/26	12/23/27	12/21/28

## Collection Schedule

Trash collection is weekly. Recycling will be picked up every other week.

If you have any questions about your trash or recycling service, you can contact Best Way

Disposal Monday through Friday from

7am to 5pm at 269.463.3232



**BANGOR, MI**  
TRAIN CITY USA  
GATEWAY TO THE LAKE



**BEST WAY**  
Recycling Guide

(269)463-3232